

Customer :

customer

Customer part :

customer part

Comment :

Comment

S1=0.21

S2=0.84

Tmax=443

Tp S2=482.0

PI=0.2

HI=100

Sample =10636.4

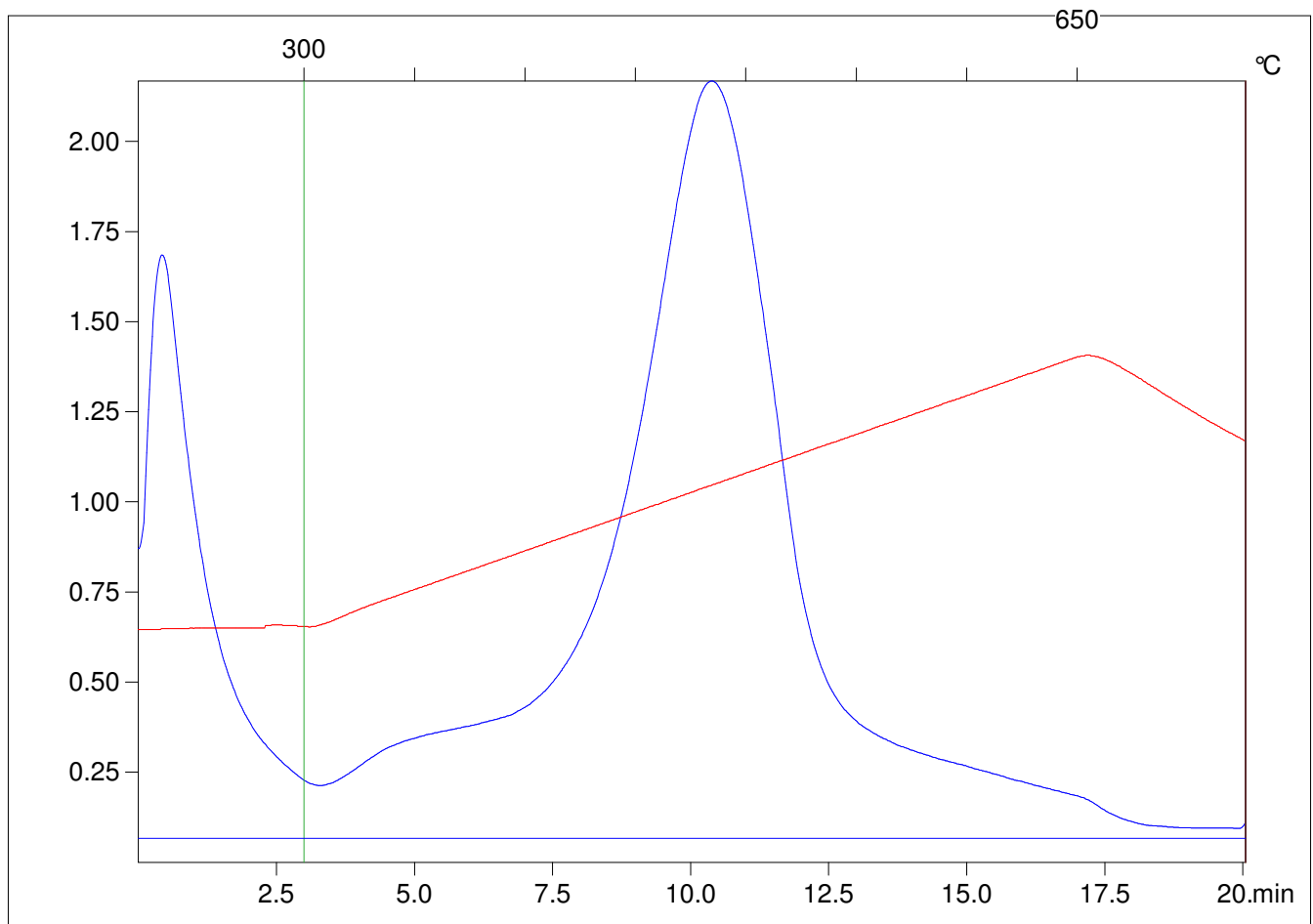
Method =Bulk Rock

Cycle=Basic

KFID(10*9)=1167

Qty =70.2

TOC=0.84



C:\VINC\PK141015\PK086.R00 : FID pyrolysis graphic

State

Pyro Status

Oxi Status